



Heat Treatment of Large Components

Bill Andreski, Gerhard L. Reese and Härterei REESE Bochum

There are three important surface hardening methods used to improve and expand the technical use of gear components. Design and material engineers must decide which hardening method to use.

Large gear components can be offered in many applications such as marine, wind power, steel rolling mills, power plants, transportation, railroad, aircraft, cement crushers, mining, and oil industry applications. There are three important surface hardening methods, as seen in Figure 1, used to improve and expand the technical use of gear components. Design and material engineers must decide which hardening method to use. Case hardening is normally the first choice because of

the highest load capacity. However, case hardening also poses challenges that must be acknowledged. Therefore, it is good to know that there are three options for very large components. So first, let's compare these methods.

THREE METHODS COMPARED

Case hardening is normally carried out at temperatures between 880°C to 980°C for carburizing, and 780°C–860°C for hardening. The standard procedure is gas car-

burizing. By diffusion of carbon into the surface and quench hardening, the process produces a strong hard surface layer of martensite of up to 10 millimeters. This thermochemical method adds defined quantities of carbon to the workpiece by using a carbon enriched gas (i.e. methane (CH₄) or propane (C₄H₈)). After carburization, the components are hardened and tempered to the required surface hardness to relieve internal stresses. In addition to a high surface hardness (max 850 HV) and



abrasion resistance, the heat-treated workpieces exhibit good reverse bending and fatigue strengths due to residual compressive stress. Specific time and temperature variations in the carburizing, hardening, and tempering processes can be introduced to optimize the material properties and minimize the changes in dimensions associated with the respective charging techniques—hereto lies the art of hardening. Nitriding treating temperatures range from 500°C–580°C for gas nitriding, and from 400°C and up for plasma nitriding and plasma nitrocarburizing. Nitriding is a method for enriching the surface layer of ferrous materials with defined quantities of nitrogen or, in the case of nitrocarburizing, of nitrogen and carbon. This not only enhances the hardness, but also the abrasion resistance, fatigue strength, corrosion resistance, and antifrictional properties. Furthermore, there are no microstructural transformations from austenite to martensite, so high dimensional stability is ensured.

Normally, nitriding penetrates to a maximum depth of 0.8 mm. “Profundinieren”, a deep nitriding method developed by Dr.-Ing. Helmut Reese, penetrates to depths exceeding 1.0 mm, depending on the material. Provided that the corresponding steels are used, non-deforming nitriding is in many instances a viable alternative to case and surface hardening. Nitriding steels are listed under DIN 17211 and EN 10085.

Surface hardening is carried out at treating temperatures 50°C–100°C above the material-specific hardening temperature. The heating can be done by flame, induction, laser, or electron beam. These processes produce a hard surface layer of martensite. These methods can also be used to harden large components or complex geometries. Induction or flame heating is applied to the heavily loaded areas (specific surfaces) of the workpiece until the respective hardening temperature is reached, after which the workpiece is quenched. Much experience is necessary for optimizing the methods and finding component-based solutions for both flame and induction hardening. Therefore, the evaluation and consistency of test samples is essential and is greatly enhanced by specific definitions of machine parameters. In summary, surface hardening is a technical and economical alternative to conventional case hardening in many instances. A side-by-side comparison of the three surface hardening methods can be seen in Table 1.

For the load capacity of a component, the important factors are hardness, case depth and core strength:

- If the load capacity of the gear is vital, case hardening is the first choice, even if the hardening distortion during nitriding is less.
- If Hertzian pressures are low, as in hydraulic cylinder applications, and low

hardness depths are sufficient, nitriding is the first choice.

- Large hardness depths in a short time, partial hardening of large components, and flexibility are assets of the surface layer hardening
- The load capacities of the three hardening methods can be compared using Figure 2 where fatigue strength is measured against hardness.
- Because of the highest load capacity, case hardening is the first choice for the treatment of large transmission components.

Three main aspects for case hardening of big gear components have to be considered:

- Hardenability (material selection and geometrical influence)
- Weight (as much as necessary, as little as possible)
- Dimensional changes and distortion

HARDENABILITY

Large components are normally quenched in oil. Cooling below the alloy M_s temperature through to the core often takes longer than one hour, depending on the size of the cross sections. During this time, the heat is conducting through the surface. Therefore, a steel must be selected, with its ferrite/pearlite nose as far to the right as possible. Otherwise, there will be a significant decrease of the surface hardness and case depth. The larger the cross-sections, the more it is necessary to utilize high-alloyed steels.

According to the experience at Reese, for large components with a cross section more than 100 mm, 18CrNiMo7-6 or 18CrNi8, or similar steel qualities with HH-alloying-scatter-band, must be chosen. The two time-temperature-transformation diagrams (see Figures 3 and 4) exhibit the

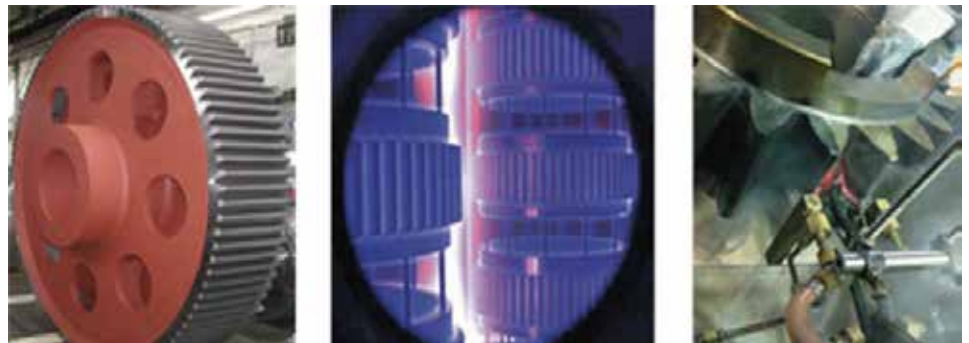


Fig 1: The three important surface hardening methods from left to right are case hardening, nitriding, and induction-flame-hardening respectively.

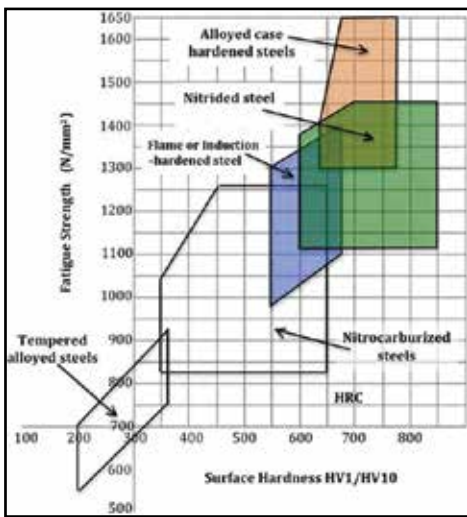


Figure 2: Load capacities of the three hardening methods: fatigue strength vs. hardness

differences between a high alloyed and low-alloyed case hardening steel.

The alloying elements Cr, Ni, Mo, Mn and V increase the hardenability, and V, Ni and Mo additions increase toughness. If a steel is selected with insufficient hardenability, regardless of intensive quenching in oil with very good

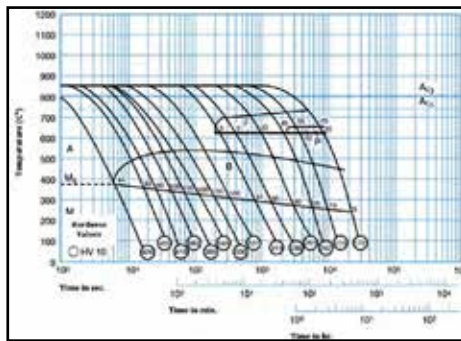


Figure 3: Time-temperature-transformation (TTT) diagram for the high alloyed case hardening steel 18CrNiMo7-6

cooling and circulation, the result will be an unacceptable drop of hardness and hardness depth of large components. This hardness reduction is evident in gear parts especially below the pitch circle down to the tooth base, to a hardness of partially well below 52 HRC. The components can fail after a short period of time by pitting, flank fractures and tooth root fractures. Using the same alloyed steels from Figures 3, 4, 6, and 7, display the relationship of hardness as a function of the distance from the quenched end. As seen, there is an

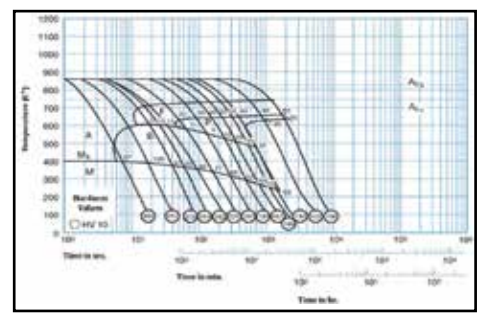


Figure 4: TTT diagram for the low alloyed case hardening steel 16MnCr5.

obviously much larger decrease in hardness as the distance between the quenched end grows with the low alloyed case hardening steel. The graphs created are a result of the Jominy hardenability test (Figure 5).

In the area of decreasing hardness to the tooth root, the CHD cannot be adequately modeled by the cylindrical geometry of a sample coupon. In particular, the geometric conditions and their influence on the cooling rates in massive components cannot be compared with small cylindrical test pieces. Case hardening results of the tooth base and tooth flank in comparison with a small cylindrical sample coupon

**Deep Case Carburizing
Stop-Off Paint**

50%

Less Expensive

Ask for **COPPER LABEL** Stop-Off Coating

- ✓ Domestically manufactured
- ✓ Single-day delivery
- ✓ Guaranteed 50% savings off published competitor's price

AVION Manufacturing
2950 Westway Drive • Suite 106 • Brunswick, Ohio 44212
Ph: 330-220-2779 • Fax: 330-220-3709 • www.avionmfg.com

HG

**NEW BOOK
By Dan Herring**

The Heat Treating Doctor™

NOW AVAILABLE

VACUUM HEAT TREATMENT
PRINCIPLES | PRACTICES | APPLICATIONS

www.heat-treat-doctor.com

	Case hardening	Surface hardening	Nitriding
Pros	<ul style="list-style-type: none"> Large case-hardening depths (CHD) of up to 10 mm, which can be achieved within treatment times of 10 to 200 h Very hard surface layer Very tough core Excellent fatigue resistance by surface compressive stresses Good under impact stresses High surface pressure 	<ul style="list-style-type: none"> High surface hardness depths (SHD): 2≥30 mm is possible, which can be reached in a short time of treatment with a relatively low energy consumption. Hard surface layer Tough core Good fatigue strength Good bending and torsion resistance 	<ul style="list-style-type: none"> Low treatment temperatures result in minimal dimensional and shape changes and therefore rework is seldom necessary Limited accessible areas can be hardened very hard surface layer, depending on the material Tough core Good fatigue properties Improved corrosion resistance Very thermostable Improved sliding properties
Cons	<ul style="list-style-type: none"> Due to the high processing temperatures, martensitic transformation and quenching, considerable dimensional changes and hardening distortions can occur. Not to be used above tempering temperature Little corrosion resistance 	<ul style="list-style-type: none"> Hardness depths below 2 mm difficult Only with inductor or flame can easily accessible areas be hardened Increased risk of cracking Expensive sample hardenings for reproducible results 	<ul style="list-style-type: none"> Low nitriding depths with a relatively long treatment time, NHD by definition only 50 HV above core hardness => 1mm NHD is considerably less than 1mm in CHD Under excessive stress, crack and fracture risk due to high surface hardness

Table 1: Comparison of three surface hardening methods (pros and cons)

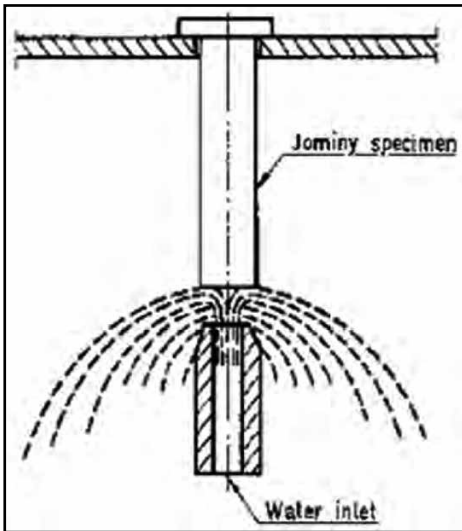


Figure 5: Jominy hardenability test

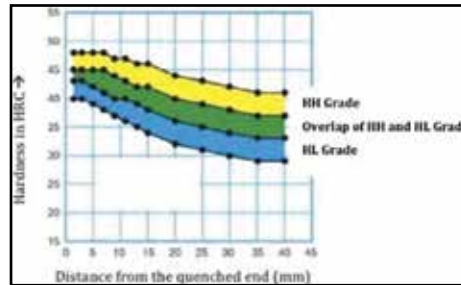


Figure 6: Hardness as a function of distance from the quenched end for 18CrNiMo7-6

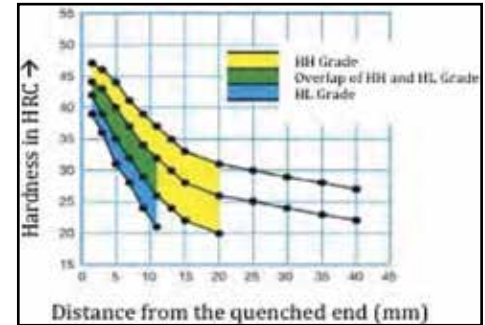


Figure 7: Hardness as a function of distance from the quenched end for 16MnCr5

and growing). Case hardening steel plants with modern computer controlled melting can specifically adjust the hardenability. It makes sense to require hardenability, grain size, and purity.

The cost is neutral for the specification for the lower 2/3 or the upper 2/3 band of hardenability. Even more favorable for the subsequent shape change, but subject to a cost surcharge, is the agreement about closer hardenability limits. Figure 8 displays possible shape change values when using case hardening steel as a function of the hardenability.

In conclusion, when selecting the material for large gear components, the geometrical influence must be taken into consideration and the following objectives must be achieved:

are not a sufficient match of the carbon depth profile. The coupon sample should therefore be shaped such that it, in addition to a custom size, also has a greater geometrical resemblance to the tooth base. A comparison of flank and root-CHD and CHD of a Ø35 mm sample coupon can be seen in Table 2. A-F represents six companies that participated in a collaborative study FVA 501. Steel hardenability has a big influence on shape changes (shrinking

1. A sufficient hardenability of the material must be chosen
2. The material cross sections must be kept as small as possible
3. The geometry must ensure dimensional stability.

Also:

- Grade steel (not “quality” steel) according to EN 10020
- Electromagnetically stirred and cooled with fan
- Fine grain steel
- Pre-hardening and annealing in oil or emulsion to estimate dimensional changes

	A Flank/30°, mm	B Flank/30°, mm	C Flank/30°, mm	D Flank/30°, mm	E Flank/30°, mm	F Flank/30°, mm
CHD _{min}	2.75/2.03	3.14/2.20	3.35/2.40	3.05/2.06	3.35/2.28	2.97/2.28
CHD _{∅35} Coupon	4.32	3.43	3.45	3.19	3.50	3.53
CHD _{root} /CHD _{flank}	0.74	0.70	0.72	0.68	0.68	0.77
CHD _{flank} /CHD ₃₅	0.57	0.91	0.97	0.95	0.96	0.84
CHD _{root} /CHD ₃₅	0.47	0.64	0.69	0.65	0.65	0.65

Table 2: Comparison of flank and root-CHD and CHD of a ∅ 35 mm sample coupon

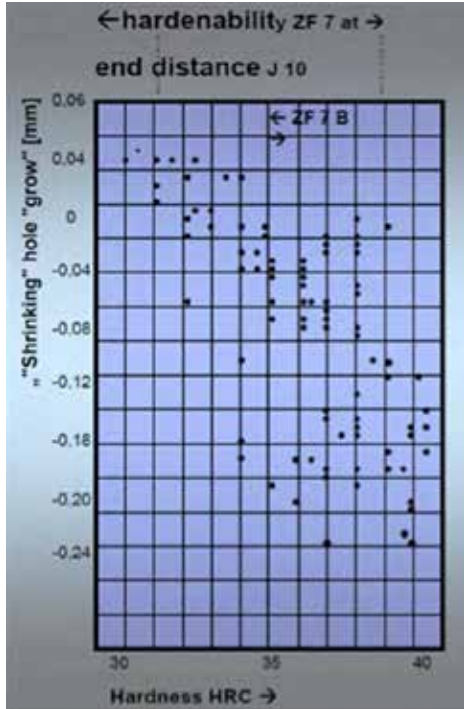


Figure 8: Shape changes when using case hardening steel as a function of the hardenability



Figure 9: Medium gears that have been made as a solid structure

WEIGHT

The weight is critical in the first line for efficiency. Weight reduction should be sought in any case, but this must not be at the expense of stability. For large gear components, weldments have been proven to be efficient and are now standard.

Small and medium sized gears, as seen in Figures 9 and 10, are usually made solid. Larger gears are usually designed as welded constructions.



Figure 10: Smaller gears made as a solid structure, no weldments necessary



Figure 11: Example of a larger gear designed as a welded construction

The welds must be protected against carburization to avoid cracking during case hardening. See Figures 11, 12 and Figure 13 for examples of larger gears containing weldments. Welding is limited, however, by maximum preheating temperature of 350–400° C. Weldments are the design of choice today. They have good dimensional stability and reduce weight.



Figure 12: Example of a larger gear designed as a welded construction

PRETREATMENT OF THE MATERIAL

According to our experience the following pretreatments have proven effective for big gear components and should be examined in detail on costs and benefits:

- 3-D forging (stretching and compressing with deformation to the core), leads to a more uniform part, reduction of segregation, reduction of pores, and refined structure to the core.
- Do not air cool after forging, but let the part temperature drop to 840°C. Then soak and harden in oil followed by tempering at 650°C.
- If this is not possible, then in addition to the forging shop, pre harden and temper at or higher than 840°C then oil quench and temper at 650°C to improve the toughness. One can draw conclusions about the dimensional change and distortion behavior by measuring before and after this process.
- Avoid the range of the irreversible temper embrittlement between 250–400°C during the entire process, i.e., rapid traveling across this range in all process stages. If possible cool from the annealing temperature of 650°C, in oil.

Direct hardening	(top Figure 18)
Single hardening or...	(middle Figure 18)
Hardening after isothermal transformation?	(bottom Figure 18)
Results of the FVA (Research Association for Drive Engineering, Research Project No. 373 "Heat Treatment of Large Gears")	
Direct hardening	
<p>Has similar tooth root strength as single hardening or hardening after isothermal transformation.</p> <p>Shows no reduction of tooth strength compared to single hardening and hardening after isothermal transformation.</p> <p>Shows a significantly better distortion behavior on a 3D coordinate measuring machine.</p> <p>Meets the total requirements of case hardened gears of quality MQ meet DIN 3990 Part 5.</p>	

Table 3: Positive effects due to choice of hardening procedure



Figure 13: Rim materials, e.g., 18CrNiMo7-6, hub and rim materials e.g., C35, C45, 34CrMo4, 42CrMo4, 36CrNiMo8

- Avoid microcracks, cavities, voids, dendrites and impurities to reduce the risk of hydrogen embrittlement and fatal delayed fractures.

DIMENSIONAL CHANGE AND DISTORTION

The reduction of dimensional change and distortion is becoming increasingly vital, depending on the size of a component. Both Figures 14 and 15 display deformations from simulation of a gear by horizontal charging.

Dimensional change means growth or shrinkage. Distortion means:

- Tapering
- Ovality
- Axial runout
- Concentricity
- Dents of support tools caused by heavy weigh

A distortion of 1 per micron at a gear with a diameter of 1000 mm (40") is only

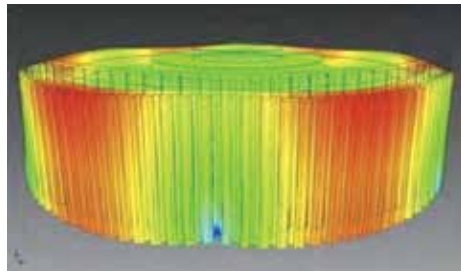


Figure 14: Deformations seen from a simulation of a gear by horizontal charging

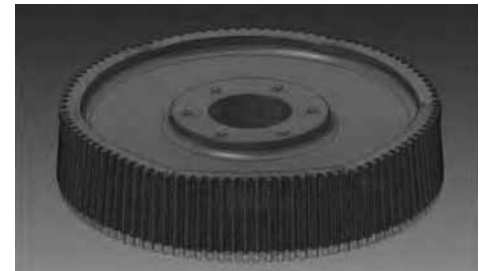


Figure 15: Deformations seen from a different view of a simulation of a gear by horizontal charging

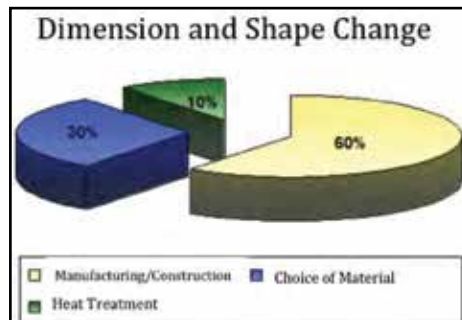


Figure 16: Factors responsible for dimensional changes after hardening process

1 mm (0.040"). A 1 per micron distortion for a 5000 mm (200") diameter gearwheel will result in a 5 mm (0.200") dimensional deviation. But 5 mm (0.200") is often the whole case hardening depth CHD. That would mean that the total hardness would have to be ground away to keep the geometry. Therefore, the goal is to minimize distortion and to anticipate dimensional changes.

Factors that influence dimensional change and distortion as seen in Figure 16:

- Over 60% of the induced tensions are due to the design and manufacturing phase.
- Up to about 30% is based on the choice of the material and its quality

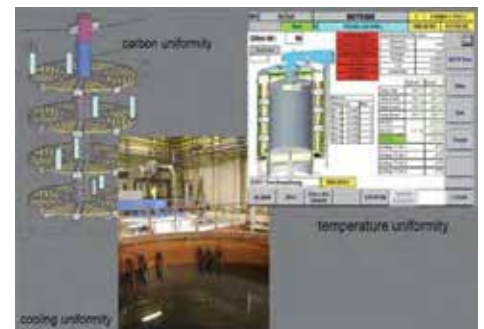


Figure 17: The key aspects of the technical features of a hardening plant: atmosphere control, temperature control, and quenching/cooling control

- Only about 10% of the influencing variables are born out of heat treatment.

Growth and shrinkage are dimensional changes caused by microstructural transformation and thermal stresses during the heat treatment process. These factors definitely determine the dimensional behavior of a workpiece, but remain mostly unavoidable during heat treatment. Distortions are caused by many factors. High residual stresses and differences in alloy concentration are among these factors as well as the choice of the material and its quality. Additionally, geometric asymmetry and non-uniform temperature distribution during the manufacturing process can

result in distortions as well. However, they can be avoided by taking the appropriate measures in the steel order, construction and the workpiece production. During the heat treating process key aspects are plant engineering, process engineering and the

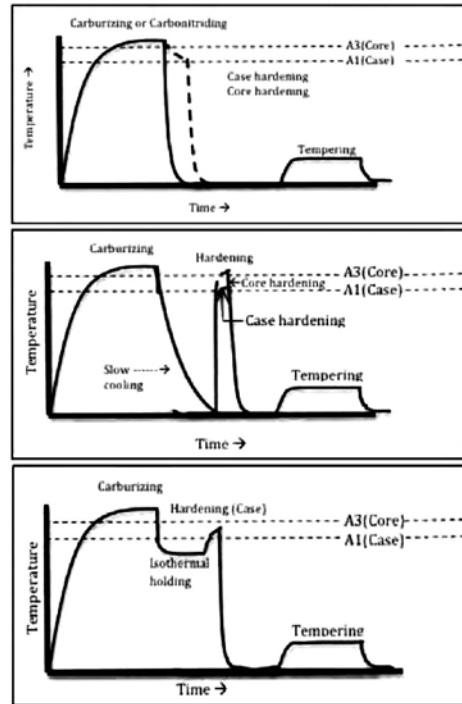


Figure 18: Positive effect due to choice of hardening procedure. The differences in hardening procedures can have a great effect on the outcome of a gear



Figure 19: Example of different possible charging method (horizontal charging)



Figure 20: Example of different possible charging method (horizontal charging)

type of charging (fixturing). These three factors however can outweigh the other factors. Thus, the hardening distortion gains a crucial importance for the success of the entire manufacturing process of big gear components.

Atmosphere control, temperature control, and quenching/cooling control are the key aspects of the technical features



Figure 21: Example of different possible charging method (horizontal charging)



Figure 22: Example of different possible charging method (vertical charging)



Figure 23: Example of different possible charging method (vertical charging)

of a hardening plant. As seen in Figure 17, all aspects are thoroughly reviewed and considered before the heat treatment process can begin.

POSITIVE EFFECTS DUE TO CHOICE OF HARDENING PROCEDURE

The differences in hardening procedures can have a great effect on the outcome of a gear. The process/environment a gear can be put through can vary as seen in Figure 18. Table 3 compares direct hardening to other methods.

POSITIVE EFFECT DUE TO CHARGING FOR HEAT TREATMENT

Various charging (fixturing) methods can be seen in Figures 19 through 24. The possible charging methods include:

- Horizontal
- Vertical
- Hanging
- Standing
- Customized Charging Devices
- Batching Tools
- Custom-Made Charging Systems

PRACTICAL EXPERIENCE OF THE SHOP MANAGER (CASE STUDIES)

For the successful low distortion heat treatment, it takes a lot of experience, and here are a few practical experiences of the REESE shop manager Klaus Hölken. Many German customers have expressed that Reese treated gears have better dimensional stability compared to competitors, and captive heat treating facilities.

PROCESS ENDORSEMENT

1. A Canadian gear manufacturer contacted Reese about gear rings with up to 30 mm distortions, mainly in the form of ovality. The question was posed, "What could be done to improve such deviations?" The gear heat treatment was completed with deviations below 0.30 mm with respect to wobble and ovality.
2. A French gear manufacturer only gave us pinion shafts for treating in the early stages. The first wheels were not very good, but still at a good quality. The growth scattered and tapering, ovality, and runout (out of flatness) were not as good compared to gears for other customers. The shop manager gave extensive material recommendations and advice for the pre-treatment and also stated that Reese would harden wheels

of around 2 m in diameter vertically—not horizontally. The customer showed a mass of gears the competition had previously hardened with 5 mm tapering. Although the optimization possibilities of the material were not fully implemented yet, Reese achieved an average runout, tapering and ovality of <math><0.5\text{ mm}</math> with a maximum chance of values of 0.7 mm. The ovality and tapering of up to 0.7 mm was caused due to the remaining bandings in the material. Uncontrolled growth is reduced by narrowing the hardenability (alloy) scatter bands and is now available in narrower limits.

3. The gear wheels of a customer in Spain have come out very well, according to the measurement capabilities.
4. Another long-time customer in France had bad experience with Reese competitors. There was dissatisfaction with the core strengths of their case-hardening process. The customer has now completely committed to the Reese program.



Figure 24: Example of different possible charging method (vertical charging)

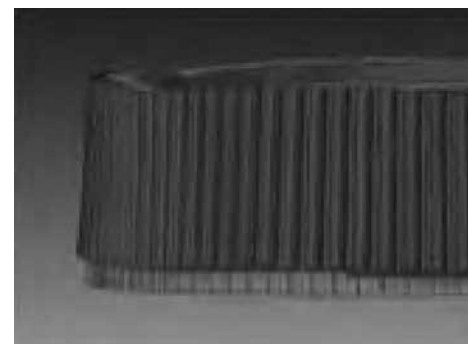


Figure 25: Simulation of the hardening distortion of a spur wheel gear with horizontal charging

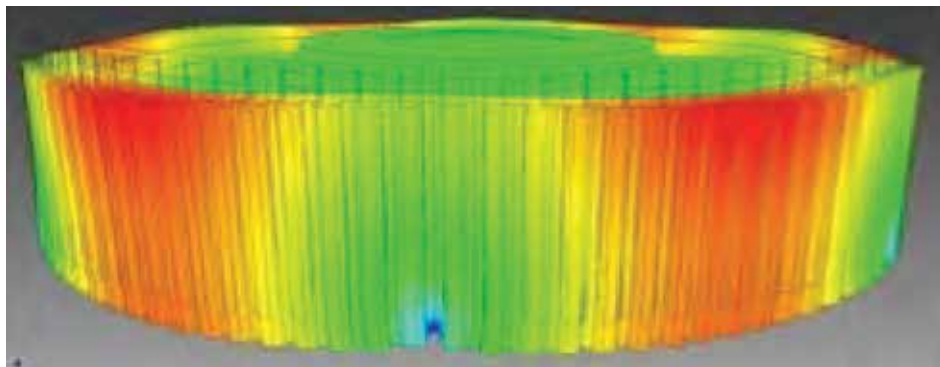
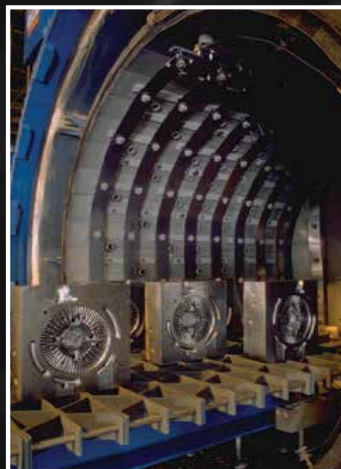


Figure 26: Simulation of the hardening distortion of a spur wheel gear with horizontal charging, stress marks shown with different colors



THE EUCLID HEAT TREATING COMPANY

The Euclid Heat Treating Company has a long history as one of the finest commercial heat treat facilities in the Greater Cleveland Area and Northeastern Ohio. We are tool & die specialists, and we heat treat all manner of steels from low carbon stampings to high speed tool steels.



Our Services Include:

- Neutral Hardening
- Carburizing/Carbonitriding
- Gas Nitriding
- Ferritic Nitro-Carburizing
- Intensive Quenching
- Vacuum Hardening w/ Oil or Nitrogen Pressure Quenching
- Induction Hardening
- Continuous Rotary Neutral & Case Hardening
- In House Metallurgical Lab
- Eddy Current Testing
- Portable XRF Material Analysis
- Media Blasting: Aluminum Oxide, Glass Bead, Steel Shot & Grit

www.euclidheattreating.com • 1-800-962-2909



Figure 27: Statistical evaluations after heat treatment of gear wheel hardened horizontally.



Figure 28: Statistical evaluation of identical gear wheel as Figure 27 hardened vertically.

Some parts are among the relatively smaller group of components, but are still very distortion sensitive.

PROCESS OUTCOMES

Vertical hardening that has been implemented on a large scale with specially designed charging methods is much better than the horizontal versions in many cases. Also, wheels that can only be treated horizontally because of the geometry, can now be hardened much better because of special adjustable supports used. Solid wheels grow in general the larger the tooth face width. If the tooth width is relatively small in relation to the diameter the wheels grow by about 1-1.5 mm. If the tooth width is larger, growth will rise to 2-2.5 mm. For very large tooth widths, such as gears for turbo transmissions, growth trends to 3-3.5 mm and more can be reported.

Welding constructions generally keep their dimension or grow up to one millimeter. Materials from 16/20MnCr5, (solid wheels and weld-

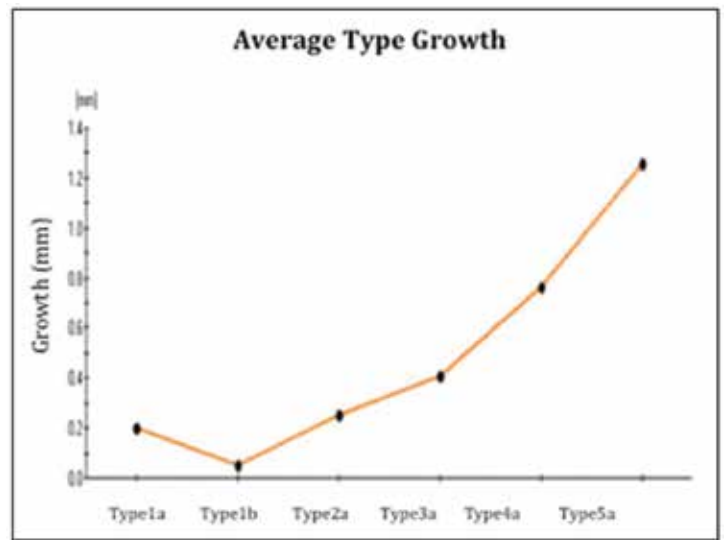


Figure 29: Simulation trend graph for dimensional changes.

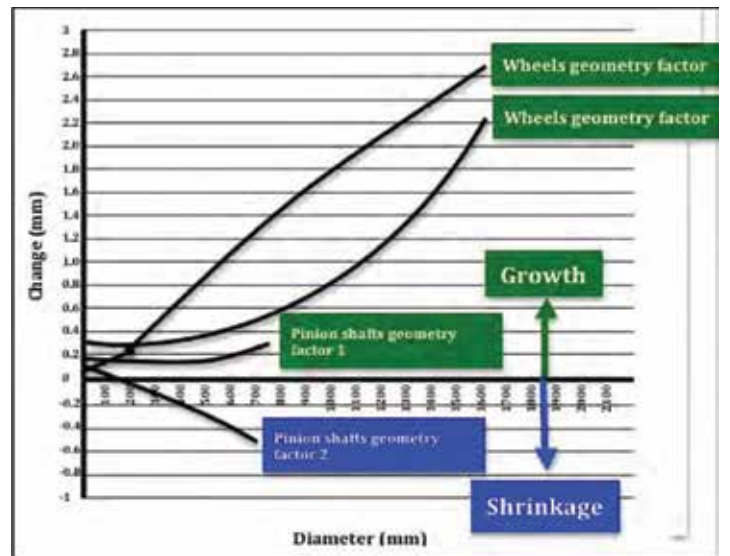


Figure 30: Simulation trend graph for dimensional changes of case hardening steels prehardened in oil (average dimensional development of 50 pieces)

ments) without banding or largely free of banding, grow only slightly by <math><1\text{mm}</math>. In the presence of banding or even mixed grain sizes, growing can occur as well as contraction (directed growth). A safe prediction is not possible, and often results in scrap. The directed growth may be a result of a smaller outer diameter, a smaller bore or greater tooth widths.

When using a 18CrNiMo7-6 in the tempered state (thus largely free from banding and mixed grain), in the version as HH-quality and with a vertical charging, Reese has experienced runout flatness, roundness and conicity/tapering of well below 1 mm. Banding in the material can lead to ovality and tapering.

An angular deviation of the toothing is also recorded with banding structure and with a lack of supporting material, or if the surfaces are too small below the teeth. If the tooth width is very small compared to diameter, angular deviations occur in the teeth. Also, the bore diameter and the hub have an influence on strength of the angular deviation of the toothing. Reliable predictions of dimensional developments can be made very accurately when: the material is good and ordered under reproducible conditions; it is measured before





Types	Various gear	Spread within the types
1		Relatively large wheels with relatively small tooth widths and relatively small holes (spur wheels)
2		Wheels with large holes and no rings/rims planet gears
3		Wheels with relatively large tooth widths and no rings/rims planet gears
4		Large bores

Table 4: Spread within the types of various gears

and after heat treatment; and hardening of a good recurring alike is ensured. High quality and exceptional charging methods along with heat treatment uniformity helps achieve optimal quality of production and material ordering.

SIMULATIONS

Computer programs are available to simulate possible results, as seen in Figures 25 and 26, based on different charging techniques before treatment. An example of a simulation of the hardening distortion of a spur gear with horizontal charging can be seen in:

- Conicity up to 3.5 mm
- Axial run-out up to 3.8 mm
- Damages due to supporting points

STATISTICAL EVALUATIONS


After the heat treatment, regular sampling

evaluations are performed. In Figures 27 and 28, the same gear wheel was evaluated after both vertical and horizontal loading. By vertical batching of gear wheels the axial runout and conicity, induced by heat treatment, can virtually be eliminated. Also ovality can be minimized with special measures. From the statistical tests and simulations, typologies (Table 4) and trend graphs for dimensional changes are derived. Figures 29 and 30 both exemplify trend graphs for dimensional changes.

CONCLUSIONS

Because of the highest load capacity, case hardening has proven to be first choice for the treatment of large transmission components. Steel selection, conditioning heat treatment, hardenability, weight, dimensional changes and distortion are the main aspects that must be met before case hard-

ening results are optimal. If these factors are perfectly harmonized the existing technical limits can be exceeded, which opens up entirely new possibilities for the gear manufacturers.

In this process, I particularly came to a decisive and crucial factor: the distortion during the hardening process. The hardening distortion has proven to be the crucial problem in the past. Reese Bochum has created the conditions to master this crucial problem of hardening distortion by the technique of vertical hardening. In addition, very low hardening distortion results can be achieved through special techniques, even with horizontal charging of gear rims and bevel gears. 

REFERENCES

- [1] Benkowsky, G. Induktionserwärmung (213-227). VEB Verlag Technik Berlin, Berlin (1980).
- [2] Weiß, T. "Zum Festigkeits- und Verzugverhalten von randschichtgehärteten Zahnradern." Dissertation Technische Universität München (1983).
- [3] Specht, F. "Induction Heat Treating Off-Highway Components." *In Heat Treating Progress* (22-25), Volume 3, Number 2, March 2003.
- [4] Marquis, F. "Traitement thermique par induction, suivi de qualité en temps reel." *Traitement Thermique* (23-27) 368, Janv.-Fév. (2006).
- [5] Schwenk, W., Peter, H.J. "Anwendungen des Zweifrequenz-Simultan-Verfahrens zum induktiven Randschichthärten." *Elektrowärme International*, Heft 1 (13-18), März 2002 (2002).
- [6] Möckel, F., Werner, J. "Praktische Erfahrungen beim Induktivhärten schrägverzählter Bauteile." *Neue Hütte*, 26 (391-92) (1981).

ABOUT THE AUTHOR:

Gerhard Reese is co-owner and managing director of Härterei Reese Bochum GmbH, a heat treating specialist in Germany, founded in 1948 by his father Dr.-Ing. Helmut Reese. He has studied mechanical engineering at the Ruhr-Universität Bochum and specialized in material science. Since then he has worked and specialized towards optimizing the available and developing new heat treatment techniques of gears and all kinds of drivetrain and other mechanical components in his heat treating shop. He also researched in the field of partial inductive hardening and other heat treating techniques on gear components.

William Andreski is the president of MetConsult, LLC.